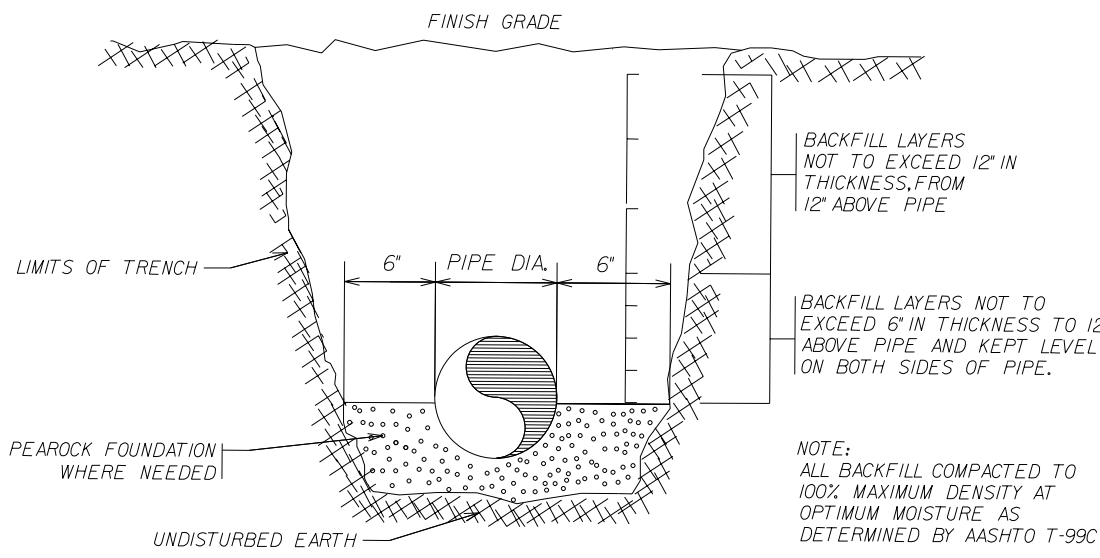
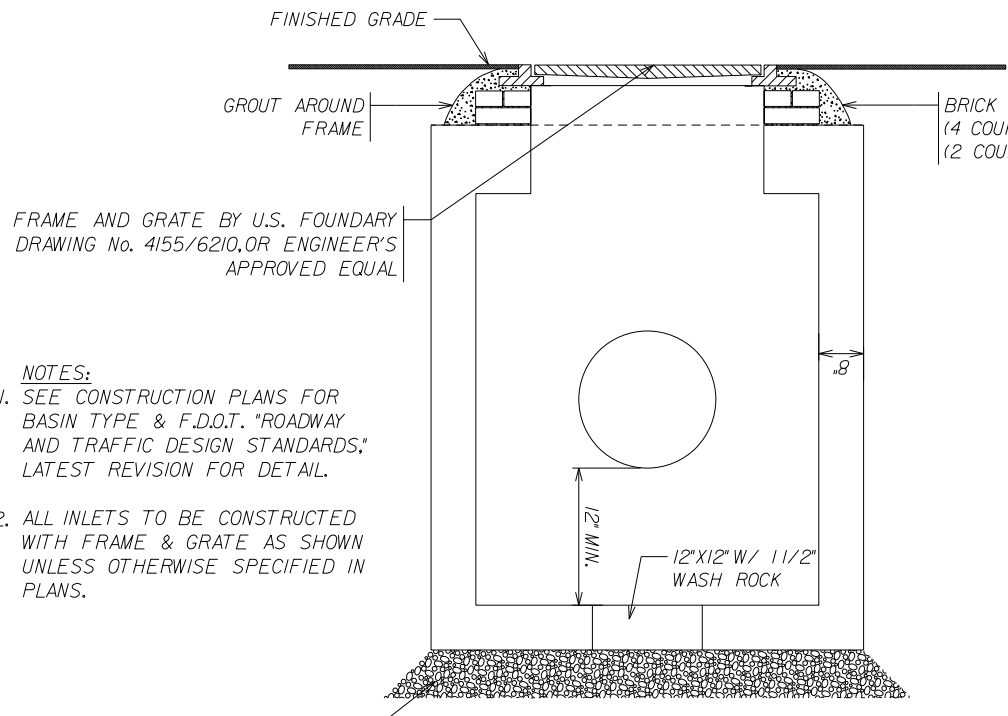


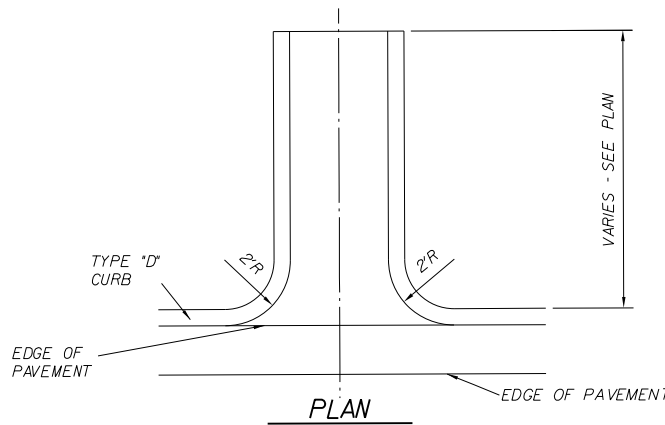
CONCRETE APRON DETAIL



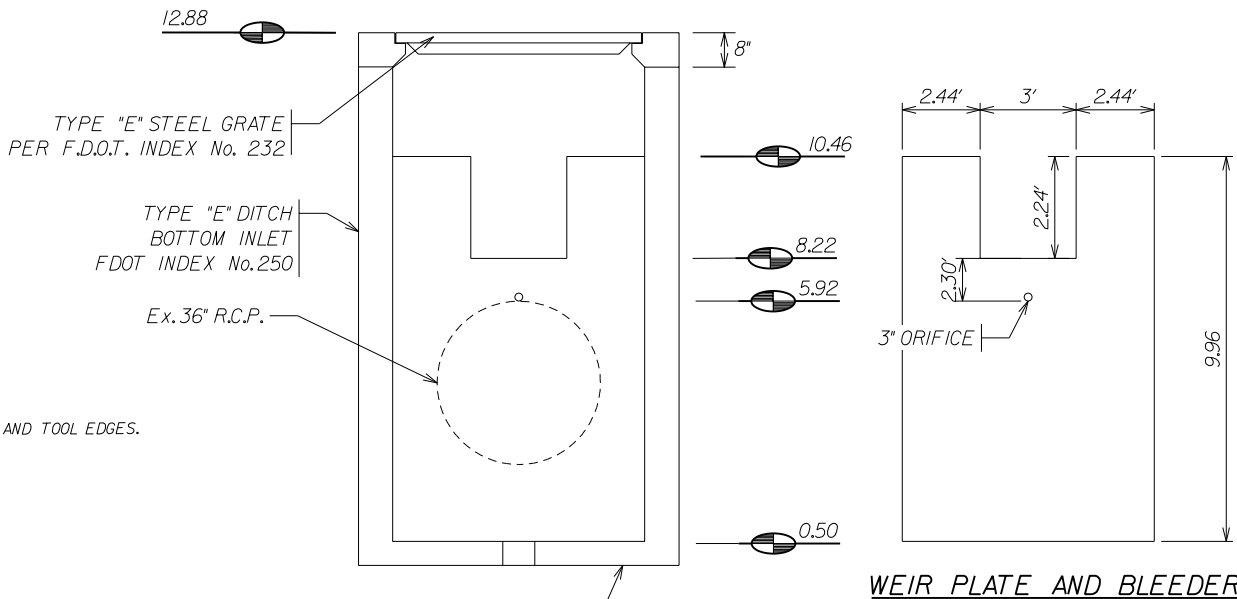
PIPE BEDDING DETAIL



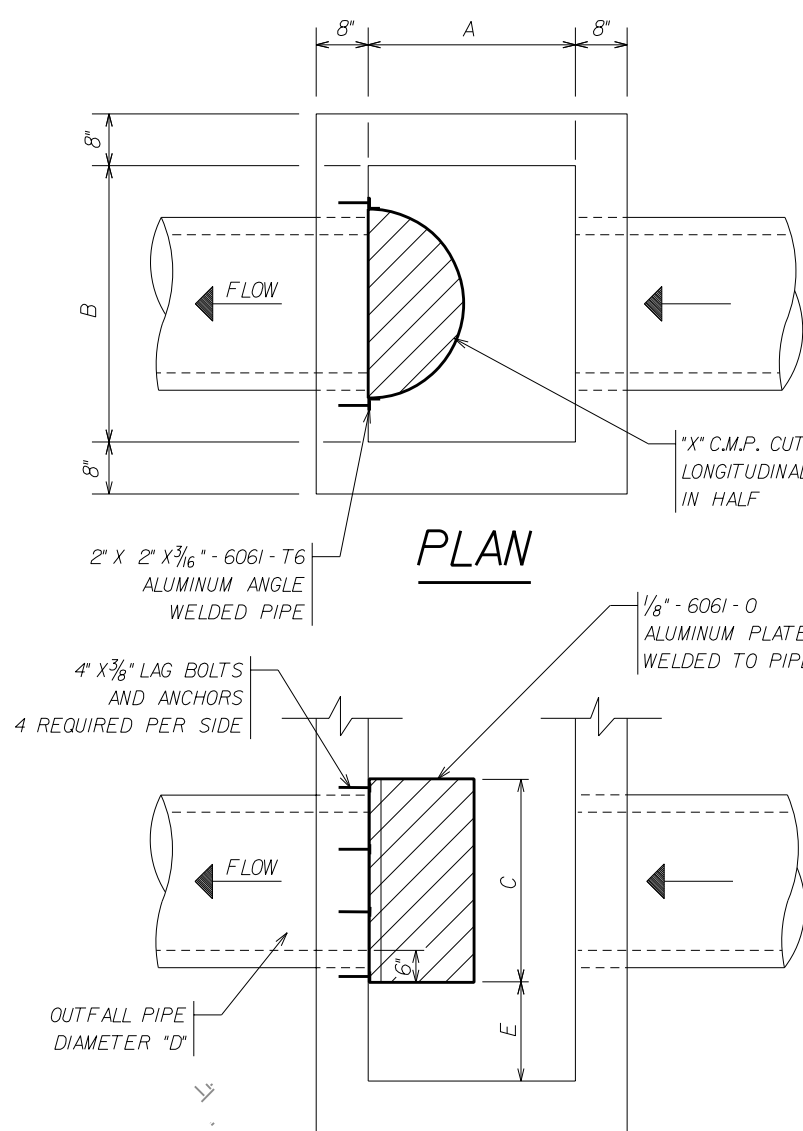
PRECAST INLET DETAIL



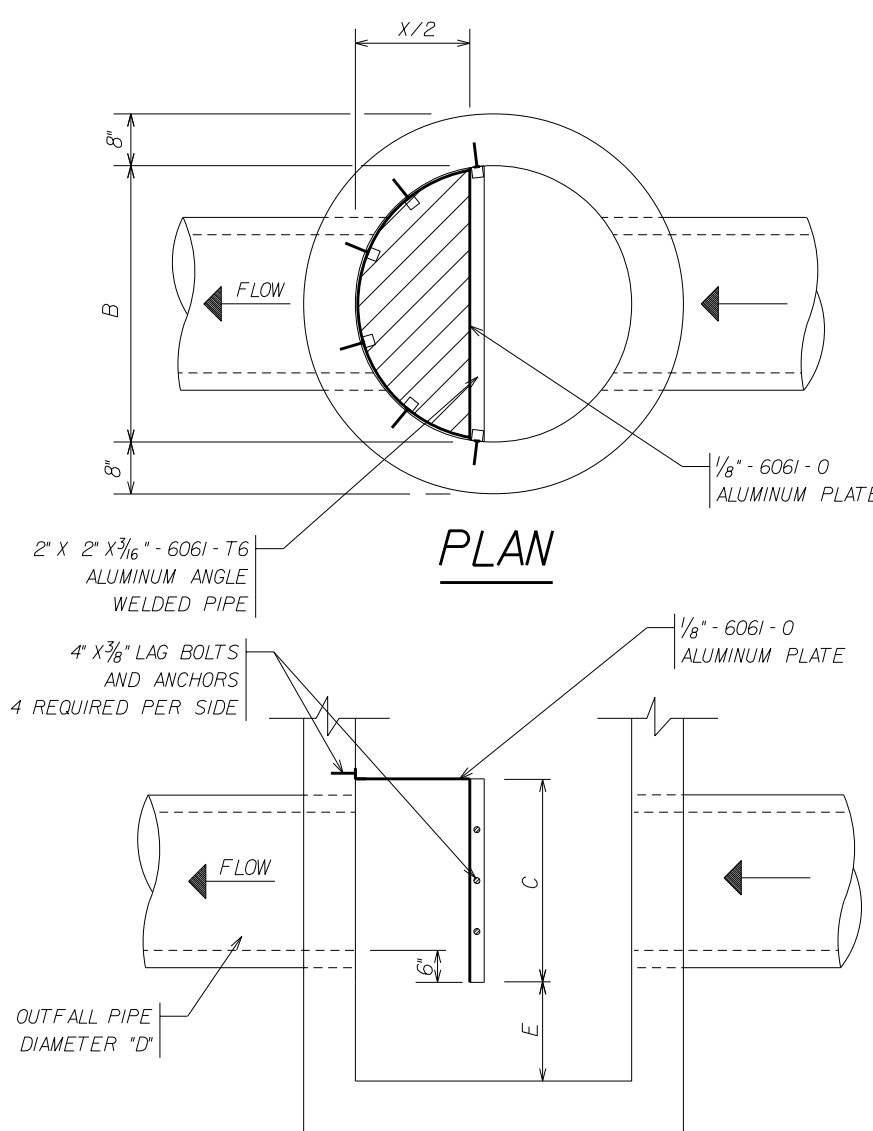
CONCRETE FLUME DETAIL



PHASE 2 CONTROL STRUCTURE DETAIL



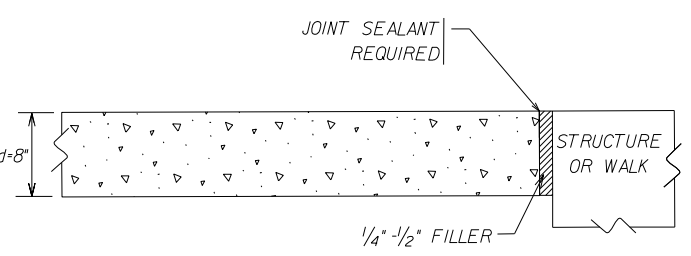
RECTANGULAR STRUCTURE



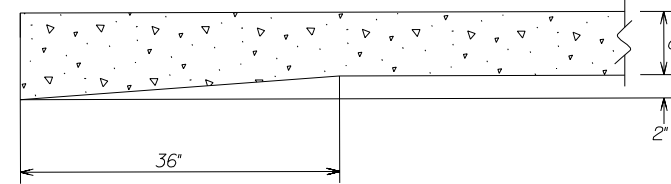
CIRCULAR STRUCTURE

BAFFLE SCHEDULE						
D	A	B	C	E	X	
15'	24"	37"	2'-3"	1'-6"	18"	
18'	24"	37"	2'-6"	1'-6"	24"	
21'	36"	36"	2'-9"	1'-6"	27"	
24'	36"	36"	3'-0"	1'-6"	30"	
30'	36"	42"	3'-6"	1'-7"	36"	
36'	42"	54"	4'-0"	2'-2"	48"	
42'	48"	60"	4'-8"	2'-6"	54"	
48'	48"	66"	5'-0"	2'-10"	60"	

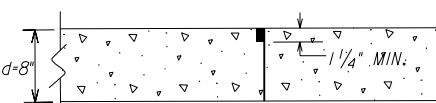
POLLUTION RETARDANT BASIN DETAIL



ISOLATION JOINTS



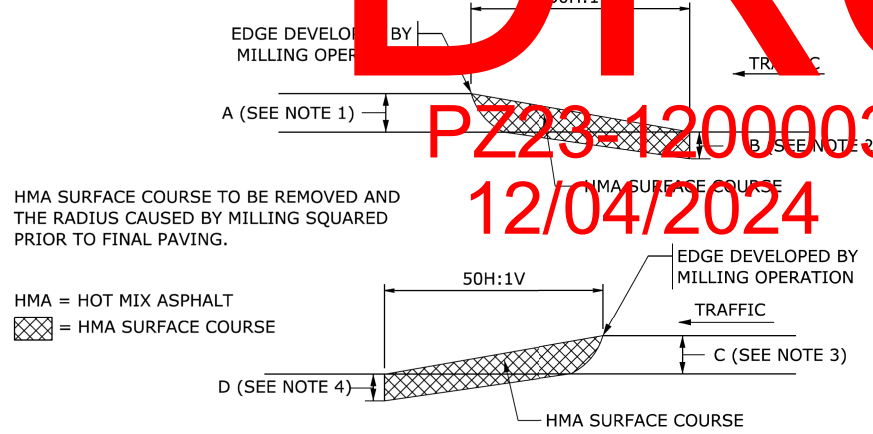
THICKENED SLAB THICKENED EDGE



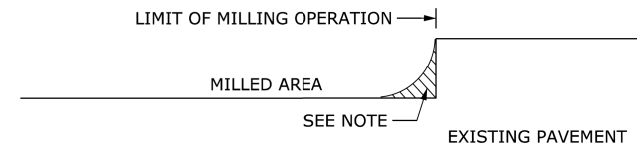
BUTT JOINT

CONTROL JOINT DETAILS

**DRC**  
P223-12000032  
12/04/2024



MILLING TRANSITIONS



END TREATMENT FOR MILLING OPERATIONS

- NOTES:
1. USE HMA SURFACE COURSE IN THE MILLING TRANSITION WHEN LEADING EDGE DEVELOPED BY MILLING OPERATION IS EQUAL TO OR GREATER THAN 1 INCH. NONE REQUIRED FOR EDGE LESS THAN 1 INCH.
  2. ENSURE THAT THE THICKNESS OF THE HMA SURFACE COURSE IN THE MILLING TRANSITION IS NOT LESS THAN B. B IS EQUAL TO 2 INCHES OR C, WHICHEVER IS LESS.
  3. USE HMA SURFACE COURSE IN THE MILLING TRANSITION WHEN TRAILING EDGE DEVELOPED BY MILLING OPERATION IS EQUAL TO OR GREATER THAN 1 1/2 INCHES. NONE REQUIRED FOR EDGE LESS THAN 1 1/2 INCHES.
  4. ENSURE THAT THE THICKNESS OF THE HMA SURFACE COURSE IN THE MILLING TRANSITION IS NOT LESS THAN D. D IS EQUAL TO 2 INCHES OR C, WHICHEVER IS LESS.



Digitally signed by Bealinda M Pell  
DN: c=US, o=Unaffiliated,  
dnQualifier=A01410C0000018E2E8  
6C2580002F48A, cn=Bealinda M  
Pell  
Date: 2024.06.19 12:30:10 -0400'  
Adobe Acrobat version: 11.0.23

NOT FOR CONSTRUCTION

PHASE 1 - SITE IMPROVEMENT  
DETAILS

BONSAL POMPARO  
OLDCASTLE COASTAL

WINNINGHAM & FRADLEY  
ENGINEERS - PLANNERS - SURVEYORS  
111 N.E. 44th STREET, CHESAPEAKE, FL 33564 (850) 775-7440 FAX 850-771-0308 www.wvfed.com

DESIGNED: CJD/GSB	DATE: 08/2018	APPROVED:
DRAWN: AMF	DATE: 08/2018	
CHECKED: WTV	DATE: 12/2019	
PUBLISHED: 6/19/2024, 10:48:08 AM		

PROJECT NUMBER 18028 SHEET 51 OF 4